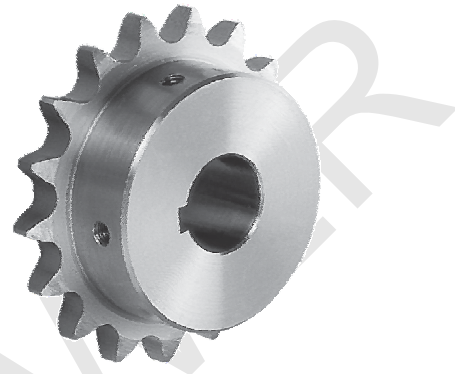
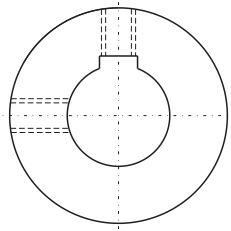
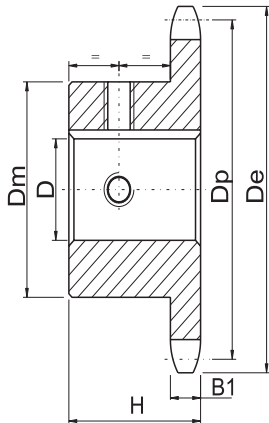


# Finished Bore Sprockets American Standard Series

# No.35

- Pitch  $\frac{3}{8}$ "       Roller  $\Phi$  0.200"
- Tooth width B1 0.168"



**TYPE BS**

**Power Transmission Professional**

## Single-Type BS — 2 Set screws — Bored To Size

No. Teeth	Number	De	H	Weight Lbs. (Approx.)	Stock Finished Bores Includes Keyway and 2 Setscrews
9	35BS9	1.260	$\frac{3}{4}$	.10	★ $\frac{3}{8}$
10	35BS10	1.380	$\frac{3}{4}$	.11	★ $\frac{3}{8}$ —★ $\frac{1}{2}$ —t $\frac{5}{8}$
11	35BS11	1.500	$\frac{3}{4}$	.15	★ $\frac{3}{8}$ —★ $\frac{1}{2}$ —t $\frac{5}{8}$ —t $\frac{3}{4}$
12	35BS12	1.630	$\frac{3}{4}$	.18	—★ $\frac{1}{2}$ — $\frac{5}{8}$ —t $\frac{3}{4}$
13	35BS13	1.750	$\frac{3}{4}$	.20	—★ $\frac{1}{2}$ — $\frac{5}{8}$ — $\frac{3}{4}$
14	35BS14	1.870	$\frac{3}{4}$	.22	—★ $\frac{1}{2}$ — $\frac{5}{8}$ — $\frac{3}{4}$
15	35BS15	1.990	$\frac{3}{4}$	.24	—★ $\frac{1}{2}$ — $\frac{5}{8}$ — $\frac{3}{4}$ — $\frac{7}{8}$ —1
16	35BS16	2.110	$\frac{3}{4}$	.29	—★ $\frac{1}{2}$ — $\frac{5}{8}$ — $\frac{3}{4}$ — $\frac{7}{8}$ —1
17	35BS17	2.230	$\frac{3}{4}$	.36	—★ $\frac{1}{2}$ — $\frac{5}{8}$ — $\frac{3}{4}$ — $\frac{7}{8}$ —1
18	35BS18	2.350	$\frac{3}{4}$	.39	—★ $\frac{1}{2}$ — $\frac{5}{8}$ — $\frac{3}{4}$ — $\frac{7}{8}$ —1
19	35BS19	2.470	$\frac{3}{4}$	.44	—★ $\frac{1}{2}$ — $\frac{5}{8}$ — $\frac{3}{4}$ — —1
20	35BS20	2.590	$\frac{3}{4}$	.51	—★ $\frac{1}{2}$ — $\frac{5}{8}$ — $\frac{3}{4}$ — —1
21	35BS21	2.710	$\frac{7}{8}$	.75	—★ $\frac{1}{2}$ — $\frac{5}{8}$ — $\frac{3}{4}$ — —1
22	35BS22	2.830	$\frac{7}{8}$	.78	—★ $\frac{1}{2}$ — $\frac{5}{8}$ — $\frac{3}{4}$ — —1
23	35BS23	2.950	$\frac{7}{8}$	.78	—★ $\frac{1}{2}$ — $\frac{5}{8}$ — $\frac{3}{4}$ — —1
24	35BS24	3.070	$\frac{7}{8}$	.79	—★ $\frac{1}{2}$ — $\frac{5}{8}$ — $\frac{3}{4}$ — —1
25	35BS25	3.190	$\frac{7}{8}$	.80	—★ $\frac{1}{2}$ — $\frac{5}{8}$ — $\frac{3}{4}$ — —1
26	35BS26	3.310	$\frac{7}{8}$	.84	— $\frac{5}{8}$ — $\frac{3}{4}$ — $\frac{7}{8}$ —1 —1 $\frac{1}{8}$ —1 $\frac{1}{16}$ —1 $\frac{1}{4}$
27	35BS27	3.430	$\frac{7}{8}$	.88	— $\frac{5}{8}$ — $\frac{3}{4}$ — $\frac{7}{8}$ —1 —1 $\frac{1}{8}$ —1 $\frac{1}{16}$ —1 $\frac{1}{4}$
28	35BS28	3.550	$\frac{7}{8}$	.86	— $\frac{5}{8}$ — $\frac{3}{4}$ — $\frac{7}{8}$ —1 —1 $\frac{1}{8}$ —1 $\frac{1}{16}$ —1 $\frac{1}{4}$
30	35BS30	3.790	$\frac{7}{8}$	.96	— $\frac{5}{8}$ — $\frac{3}{4}$ — $\frac{7}{8}$ —1 —1 $\frac{1}{8}$ —1 $\frac{1}{16}$ —1 $\frac{1}{4}$
32	35BS32	4.030	$\frac{7}{8}$	1.14	— $\frac{5}{8}$ — $\frac{3}{4}$ — $\frac{7}{8}$ —1 —1 $\frac{1}{8}$ —1 $\frac{1}{16}$ —1 $\frac{1}{4}$
35	35BS35	4.390	1	1.38	— $\frac{5}{8}$ — $\frac{3}{4}$ — $\frac{7}{8}$ —1 —1 $\frac{1}{8}$ —1 $\frac{1}{16}$ —1 $\frac{1}{4}$
36	35BS36	4.510	1	1.41	— $\frac{5}{8}$ — $\frac{3}{4}$ — $\frac{7}{8}$ —1 —1 $\frac{1}{8}$ —1 $\frac{1}{16}$ —1 $\frac{1}{4}$
40	35BS40	4.990	1	1.56	— $\frac{5}{8}$ — $\frac{3}{4}$ — $\frac{7}{8}$ —1 —1 $\frac{1}{8}$ —1 $\frac{1}{16}$ —1 $\frac{1}{4}$
42	35BS42	5.230	1	1.64	— $\frac{5}{8}$ — $\frac{3}{4}$ — $\frac{7}{8}$ —1 —1 $\frac{1}{8}$ —1 $\frac{1}{16}$ —1 $\frac{1}{4}$
45	35BS45	5.590	1	1.74	— $\frac{5}{8}$ — $\frac{3}{4}$ — $\frac{7}{8}$ —1 —1 $\frac{1}{8}$ —1 $\frac{1}{16}$ —1 $\frac{1}{4}$
48	35BS48	5.950	1	1.86	— $\frac{5}{8}$ — $\frac{3}{4}$ — $\frac{7}{8}$ —1 —1 $\frac{1}{8}$ —1 $\frac{1}{16}$ —1 $\frac{1}{4}$
54	35BS54	6.660	1	1.98	— $\frac{5}{8}$ — $\frac{3}{4}$ — $\frac{7}{8}$ —1 —1 $\frac{1}{8}$ —1 $\frac{1}{16}$ —1 $\frac{1}{4}$
60	35BS60	7.380	1	2.34	— $\frac{5}{8}$ — $\frac{3}{4}$ — $\frac{7}{8}$ —1 —1 $\frac{1}{8}$ —1 $\frac{1}{16}$ —1 $\frac{1}{4}$
70	35BS70	8.580	1	3.14	— $\frac{3}{4}$ — $\frac{7}{8}$ —1 —1 $\frac{1}{8}$ —1 $\frac{1}{16}$ —1 $\frac{1}{4}$
72	35BS72	8.810	1	3.30	— $\frac{3}{4}$ — $\frac{7}{8}$ —1 —1 $\frac{1}{8}$ —1 $\frac{1}{16}$ —1 $\frac{1}{4}$
80	35BS80	9.770	1	3.94	— $\frac{3}{4}$ — $\frac{7}{8}$ —1 —1 $\frac{1}{8}$ —1 $\frac{1}{16}$ —1 $\frac{1}{4}$
84	35BS84	10.250	1	4.26	— $\frac{3}{4}$ — $\frac{7}{8}$ —1 —1 $\frac{1}{8}$ —1 $\frac{1}{16}$ —1 $\frac{1}{4}$
96	35BS96	11.680	1	5.22	— $\frac{3}{4}$ — $\frac{7}{8}$ —1 —1 $\frac{1}{8}$ —1 $\frac{1}{16}$ —1 $\frac{1}{4}$
112	35BS112	13.590	1	6.50	— $\frac{3}{4}$ — $\frac{7}{8}$ —1 —1 $\frac{1}{8}$ —1 $\frac{1}{16}$ —1 $\frac{1}{4}$

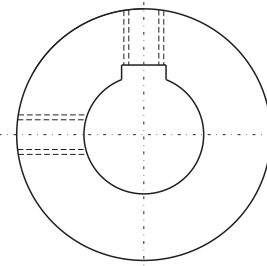
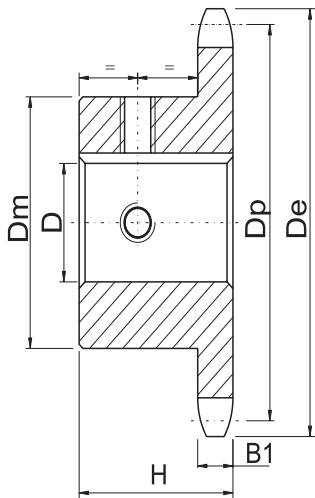
★ Indicates no keyway.  
 2  $\frac{3}{4}$ " setscrews only in  $\frac{1}{2}$ " &  $\frac{3}{8}$ " bore.  
 † Keyway with Setscrew at 90°.  
 Hub diameters vary to suit different bore sizes.

NOTE: KEYWAY IS ON CENTER LINE OF TOOTH.

# Finished Bore Sprockets American Standard Series

# No.35

- Pitch  $\frac{3}{8}$ "       Roller  $\Phi$  0.200"
- Tooth width B1 0.168"



**TYPE BS**

**Power Transmission Professional**

## No.35-Hardened Teeth — 2 Setscrews — Bored To Size

No. Teeth	Number	De	H	Weight Lbs. (Approx.)	Stock Finished Bores Includes Keyway and 2 Setscrews
9	35BS9HT	1.260	$\frac{3}{4}$	.10	★ $\frac{3}{8}$
10	35BS10HT	1.380	$\frac{3}{4}$	.11	★ $\frac{3}{8}$ — ★ $\frac{1}{2}$ — t $\frac{5}{8}$
11	35BS11HT	1.500	$\frac{3}{4}$	.15	★ $\frac{3}{8}$ — ★ $\frac{1}{2}$ — t $\frac{5}{8}$ — t $\frac{3}{4}$
12	35BS12HT	1.630	$\frac{3}{4}$	.18	— ★ $\frac{1}{2}$ — $\frac{5}{8}$ — $\frac{3}{4}$
13	35BS13HT	1.750	$\frac{3}{4}$	.20	— ★ $\frac{1}{2}$ — $\frac{5}{8}$ — $\frac{3}{4}$
14	35BS14HT	1.870	$\frac{3}{4}$	.22	— ★ $\frac{1}{2}$ — $\frac{5}{8}$ — $\frac{3}{4}$
15	35BS15HT	1.990	$\frac{3}{4}$	.24	— ★ $\frac{1}{2}$ — $\frac{5}{8}$ — $\frac{3}{4}$ — $\frac{7}{8}$ — 1
16	35BS16HT	2.110	$\frac{3}{4}$	.29	— ★ $\frac{1}{2}$ — $\frac{5}{8}$ — $\frac{3}{4}$ — $\frac{7}{8}$ — 1
17	35BS17HT	2.230	$\frac{3}{4}$	.36	— ★ $\frac{1}{2}$ — $\frac{5}{8}$ — $\frac{3}{4}$ — $\frac{7}{8}$ — 1
18	35BS18HT	2.350	$\frac{3}{4}$	.39	— ★ $\frac{1}{2}$ — $\frac{5}{8}$ — $\frac{3}{4}$ — $\frac{7}{8}$ — 1
19	35BS19HT	2.470	$\frac{3}{4}$	.44	$\frac{5}{8}$ — $\frac{3}{4}$ — — 1
20	35BS20HT	2.590	$\frac{3}{4}$	.51	$\frac{5}{8}$ — $\frac{3}{4}$ — — 1
21	35BS21HT	2.710	$\frac{7}{8}$	.75	$\frac{5}{8}$ — $\frac{3}{4}$ — — 1
22	35BS22HT	2.830	$\frac{7}{8}$	.76	$\frac{5}{8}$ — $\frac{3}{4}$ — — 1
23	35BS23HT	2.950	$\frac{7}{8}$	.78	$\frac{5}{8}$ — $\frac{3}{4}$ — — 1
24	35BS24HT	3.070	$\frac{7}{8}$	.79	$\frac{5}{8}$ — $\frac{3}{4}$ — — 1
25	35BS25HT	3.190	$\frac{7}{8}$	.80	$\frac{5}{8}$ — $\frac{3}{4}$ — — 1
26	35BS26HT	3.310	$\frac{7}{8}$	.84	$\frac{5}{8}$ — $\frac{3}{4}$ — — 1
28	35BS28HT	3.550	$\frac{7}{8}$	.88	$\frac{5}{8}$ — $\frac{3}{4}$ — — 1
30	35BS30HT	3.790	$\frac{7}{8}$	96	$\frac{5}{8}$ — $\frac{3}{4}$ — — 1

★ Indicates no keyway.  
 2  $\frac{1}{4}$ " setscrews only in  $\frac{1}{2}$ " &  $\frac{3}{8}$ " bore at 90° .  
 † Setscrews at 90° and 180° to key.

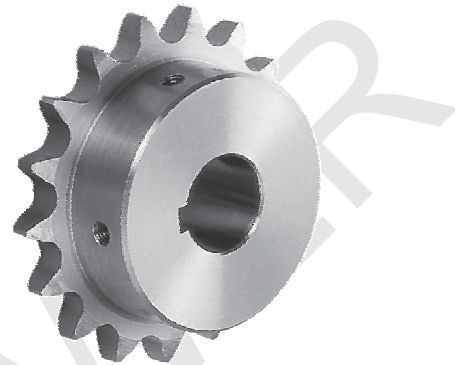
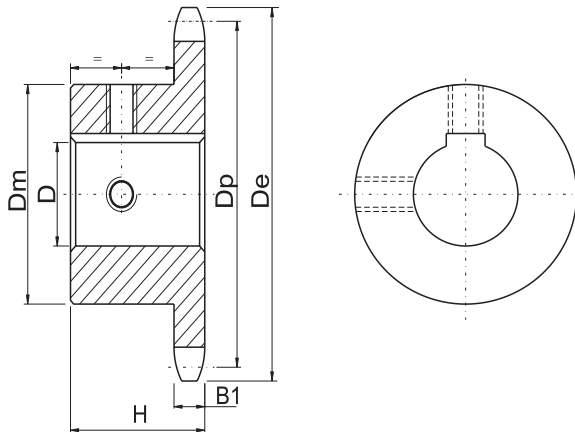
NOTE: KEYWAY IS ON CENTER LINE OF TOOTH.

Stock hardened teeth sprockets afford longer chain and sprocket life .Hardened teeth on the smaller sprocket of a roller chain drive are recommended if the drive ratio is four to one or greater or if the smaller sprocket has 24 teeth or less and is running at a speed of over 600 R.P.M.

# Finished Bore Sprockets American Standard Series

# No.41

- Pitch  $\frac{1}{2}$ "       Roller  $\Phi$  0.306"
- Tooth width B1 0.227"



TYPE BS

Power Transmission Professional

## Single-Type BS — 2 Setscrews — Bored To Size

No. Teeth	Number	De	H	Weight Lbs. (Approx.)	Stock Finished Bores Includes Keyway and 2 Setscrews
9	41BS9	1.670	$\frac{7}{8}$	.20	★ $\frac{1}{2}$ — $\frac{5}{8}$
10	41BS10	1.840	$\frac{7}{8}$	.25	★ $\frac{1}{2}$ — $\frac{5}{8}$
11	41BS11	2.000	$\frac{7}{8}$	.32	★ $\frac{1}{2}$ — $\frac{5}{8}$ — $\frac{3}{4}$
12	41BS12	2.170	$\frac{7}{8}$	.33	★ $\frac{1}{2}$ — $\frac{5}{8}$ — $\frac{3}{4}$ — $\frac{7}{8}$
13	41BS13	2.330	$\frac{7}{8}$	.43	★ $\frac{1}{2}$ — $\frac{5}{8}$ — $\frac{3}{4}$ — $\frac{7}{8}$ — 1
14	41BS14	2.490	$\frac{7}{8}$	.48	★ $\frac{1}{2}$ — $\frac{5}{8}$ — $\frac{3}{4}$ — $\frac{7}{8}$ — 1
15	41BS15	2.650	$\frac{7}{8}$	.59	★ $\frac{1}{2}$ — $\frac{5}{8}$ — $\frac{3}{4}$ — — — 1
16	41BS16	2.810	$\frac{7}{8}$	.72	— $\frac{5}{8}$ — $\frac{3}{4}$ — — — 1
17	41BS17	2.980	1	1.00	— $\frac{5}{8}$ — $\frac{3}{4}$ — — — 1
18	41BS18	3.140	1	1.10	— $\frac{5}{8}$ — $\frac{3}{4}$ — — — 1
19	41BS19	3.300	1	1.21	— $\frac{5}{8}$ — $\frac{3}{4}$ — — — 1
20	41BS20	3.460	1	1.39	— $\frac{5}{8}$ — $\frac{3}{4}$ — — — 1
21	41BS21	3.620	1	1.77	— $\frac{5}{8}$ — $\frac{3}{4}$ — — — 1
22	41BS22	3.780	1	1.92	— $\frac{5}{8}$ — $\frac{3}{4}$ — — — 1
23	41BS23	3.940	1	2.18	— $\frac{5}{8}$ — $\frac{3}{4}$ — — — 1
24	41BS24	4.100	1	2.24	— $\frac{5}{8}$ — $\frac{3}{4}$ — — — 1
25	41BS25	4.260	1	2.42	— $\frac{5}{8}$ — $\frac{3}{4}$ — — — 1
26	41BS26	4.420	1	2.46	— $\frac{5}{8}$ — $\frac{3}{4}$ — — — 1
27	41BS27	4.580	1	2.52	— $\frac{5}{8}$ — $\frac{3}{4}$ — — — 1
28	41BS28	4.740	1	2.60	— $\frac{5}{8}$ — $\frac{3}{4}$ — — — 1
30	41BS30	5.060	1	2.76	— $\frac{5}{8}$ — $\frac{3}{4}$ — — — 1
32	41BS32	5.380	1	2.92	— $\frac{5}{8}$ — $\frac{3}{4}$ — — — 1
35	41BS35	5.860	1	3.08	— $\frac{5}{8}$ — $\frac{3}{4}$ — — — 1
36	41BS36	6.020	1	3.28	— $\frac{5}{8}$ — $\frac{3}{4}$ — — — 1
40	41BS40	6.650	$1\frac{1}{16}$	3.82	— $\frac{5}{8}$ — — — 1 — $1\frac{1}{8}$ — $1\frac{1}{16}$ — $1\frac{1}{4}$ — $1\frac{1}{8}$ — $1\frac{1}{16}$ — $1\frac{1}{2}$
42	41BS42	6.970	$1\frac{1}{16}$	3.68	— $\frac{3}{4}$ — — — 1 — $1\frac{1}{8}$ — $1\frac{1}{16}$ — $1\frac{1}{4}$ — $1\frac{1}{8}$ — $1\frac{1}{16}$ — $1\frac{1}{2}$
45	41BS45	7.450	$1\frac{1}{16}$	3.94	— $\frac{3}{4}$ — — — 1 — $1\frac{1}{8}$ — $1\frac{1}{16}$ — $1\frac{1}{4}$ — $1\frac{1}{8}$ — $1\frac{1}{16}$ — $1\frac{1}{2}$
48	41BS48	7.930	$1\frac{1}{16}$	4.68	— $\frac{3}{4}$ — — — 1 — $1\frac{1}{8}$ — $1\frac{1}{16}$ — $1\frac{1}{4}$ — $1\frac{1}{8}$ — $1\frac{1}{16}$ — $1\frac{1}{2}$
54	41BS54	8.890	$1\frac{1}{16}$	5.44	— $\frac{3}{4}$ — — — 1 — $1\frac{1}{8}$ — $1\frac{1}{16}$ — $1\frac{1}{4}$ — $1\frac{1}{8}$ — $1\frac{1}{16}$ — $1\frac{1}{2}$
60	41BS60	9.840	$1\frac{1}{16}$	6.54	— $\frac{3}{4}$ — — — 1 — $1\frac{1}{8}$ — $1\frac{1}{16}$ — $1\frac{1}{4}$ — $1\frac{1}{8}$ — $1\frac{1}{16}$ — $1\frac{1}{2}$
70	41BS70	11.430	$1\frac{1}{16}$	9.28	— $\frac{3}{4}$ — — — 1 — $1\frac{1}{8}$ — $1\frac{1}{16}$ — $1\frac{1}{4}$ — $1\frac{1}{8}$ — $1\frac{1}{16}$ — $1\frac{1}{2}$
72	41BS72	11.750	$1\frac{1}{16}$	9.38	— $\frac{3}{4}$ — — — 1 — $1\frac{1}{8}$ — $1\frac{1}{16}$ — $1\frac{1}{4}$ — $1\frac{1}{8}$ — $1\frac{1}{16}$ — $1\frac{1}{2}$
80	41BS80	13.030	$1\frac{1}{16}$	11.28	— $\frac{3}{4}$ — — — 1 — $1\frac{1}{8}$ — $1\frac{1}{16}$ — $1\frac{1}{4}$ — $1\frac{1}{8}$ — $1\frac{1}{16}$ — $1\frac{1}{2}$
84	41BS84	13.660	$1\frac{1}{16}$	11.94	— $\frac{3}{4}$ — — — 1 — $1\frac{1}{8}$ — $1\frac{1}{16}$ — $1\frac{1}{4}$ — $1\frac{1}{8}$ — $1\frac{1}{16}$ — $1\frac{1}{2}$
96	41BS96	15.570	$1\frac{1}{16}$	14.51	— $\frac{3}{4}$ — — — 1 — $1\frac{1}{8}$ — $1\frac{1}{16}$ — $1\frac{1}{4}$ — $1\frac{1}{8}$ — $1\frac{1}{16}$ — $1\frac{1}{2}$
112	41BS112	18.120	$1\frac{1}{16}$	18.81	— $\frac{3}{4}$ — — — 1 — $1\frac{1}{8}$ — $1\frac{1}{16}$ — $1\frac{1}{4}$ — $1\frac{1}{8}$ — $1\frac{1}{16}$ — $1\frac{1}{2}$

★ Indicates no keyway. (2)  $\frac{1}{4}$ " setscrews only in  $\frac{1}{2}$ " bore. Hub diameters vary to suit different bore sizes.

NOTE: KEYWAY IS ON CENTER LINE OF TOOTH.

# Finished Bore Sprockets American Standard Series

# No.40

Pitch  $\frac{1}{2}$ "  Roller  $\Phi$  0.312"  
 Tooth width B1 0.284"

## Single-Type BS — 2 Setscrews — Bored To Size

No. Teeth	Number	De	H	Weight Lbs. (Approx.)	Stock Finished Bores Includes Keyway and 2 Setscrews
9	40BS9	1.670	$\frac{7}{8}$	.16	★ $\frac{1}{2}$ — $\frac{5}{8}$
10	40BS10	1.840	$\frac{7}{8}$	.24	★ $\frac{1}{2}$ — $\frac{5}{8}$ — $\frac{3}{4}$
11	40BS11	2.000	$\frac{7}{8}$	.28	★ $\frac{1}{2}$ — $\frac{5}{8}$ — $\frac{3}{4}$ — $\frac{7}{8}$
12	40BS12	2.170	$\frac{7}{8}$	.34	★ $\frac{1}{2}$ — $\frac{5}{8}$ — $\frac{3}{4}$ — $\frac{7}{8}$ — 1
13	40BS13	2.330	$\frac{7}{8}$	.45	★ $\frac{1}{2}$ — $\frac{5}{8}$ — $\frac{3}{4}$ — $\frac{7}{8}$ — 1
14	40BS14	2.490	$\frac{7}{8}$	.51	★ $\frac{1}{2}$ — $\frac{5}{8}$ — $\frac{3}{4}$ — $\frac{7}{8}$ — 1 — $1\frac{1}{8}$
15	40BS15	2.650	$\frac{7}{8}$	.53	★ $\frac{1}{2}$ — $\frac{5}{8}$ — $\frac{3}{4}$ — $\frac{7}{8}$ — 1 — $1\frac{1}{8}$ — $1\frac{3}{16}$ — $1\frac{1}{4}$
16	40BS16	2.810	$\frac{7}{8}$	.66	$\frac{5}{8}$ — $\frac{3}{4}$ — $\frac{7}{8}$ — 1 — $1\frac{1}{8}$ — $1\frac{3}{16}$ — $1\frac{1}{4}$
17	40BS17	2.980	1	.88	$\frac{5}{8}$ — $\frac{3}{4}$ — $\frac{7}{8}$ — 1 — $1\frac{1}{8}$ — $1\frac{3}{16}$ — $1\frac{1}{4}$
18	40BS18	3.140	1	1.03	$\frac{5}{8}$ — $\frac{3}{4}$ — $\frac{7}{8}$ — 1 — $1\frac{1}{8}$ — $1\frac{3}{16}$ — $1\frac{1}{4}$ — $1\frac{3}{8}$ — $1\frac{7}{16}$ — $1\frac{1}{2}$
19	40BS19	3.300	1	1.17	$\frac{5}{8}$ — $\frac{3}{4}$ — $\frac{7}{8}$ — 1 — $1\frac{1}{8}$ — $1\frac{3}{16}$ — $1\frac{1}{4}$ — $1\frac{3}{8}$ — $1\frac{7}{16}$ — $1\frac{1}{2}$
20	40BS20	3.460	1	1.33	$\frac{5}{8}$ — $\frac{3}{4}$ — $\frac{7}{8}$ — 1 — $1\frac{1}{8}$ — $1\frac{3}{16}$ — $1\frac{1}{4}$ — $1\frac{3}{8}$ — $1\frac{7}{16}$ — $1\frac{1}{2}$
21	40BS21	3.620	1	1.53	$\frac{5}{8}$ — $\frac{3}{4}$ — $\frac{7}{8}$ — 1 — $1\frac{1}{8}$ — $1\frac{3}{16}$ — $1\frac{1}{4}$ — $1\frac{3}{8}$ — $1\frac{7}{16}$ — $1\frac{1}{2}$
22	40BS22	3.780	1	1.66	$\frac{5}{8}$ — $\frac{3}{4}$ — $\frac{7}{8}$ — 1 — $1\frac{1}{8}$ — $1\frac{3}{16}$ — $1\frac{1}{4}$ — $1\frac{3}{8}$ — $1\frac{7}{16}$ — $1\frac{1}{2}$
23	40BS23	3.940	1	1.92	$\frac{5}{8}$ — $\frac{3}{4}$ — $\frac{7}{8}$ — 1 — $1\frac{1}{8}$ — $1\frac{3}{16}$ — $1\frac{1}{4}$ — $1\frac{3}{8}$ — $1\frac{7}{16}$ — $1\frac{1}{2}$
24	40BS24	4.100	1	2.10	$\frac{5}{8}$ — $\frac{3}{4}$ — $\frac{7}{8}$ — 1 — $1\frac{1}{8}$ — $1\frac{3}{16}$ — $1\frac{1}{4}$ — $1\frac{3}{8}$ — $1\frac{7}{16}$ — $1\frac{1}{2}$
25	40BS25	4.260	1	2.22	$\frac{5}{8}$ — $\frac{3}{4}$ — $\frac{7}{8}$ — 1 — $1\frac{1}{8}$ — $1\frac{3}{16}$ — $1\frac{1}{4}$ — — — $1\frac{7}{16}$ — $1\frac{1}{2}$
26	40BS26	4.420	1	2.34	$\frac{5}{8}$ — $\frac{3}{4}$ — $\frac{7}{8}$ — 1 — $1\frac{1}{8}$ — $1\frac{3}{16}$ — $1\frac{1}{4}$ — — — $1\frac{7}{16}$ — $1\frac{1}{2}$
27	40BS27	4.580	1	2.42	$\frac{5}{8}$ — $\frac{3}{4}$ — $\frac{7}{8}$ — 1 — $1\frac{1}{8}$ — $1\frac{3}{16}$ — $1\frac{1}{4}$ — — — $1\frac{7}{16}$ — $1\frac{1}{2}$
28	40BS28	4.740	1	2.50	$\frac{5}{8}$ — $\frac{3}{4}$ — $\frac{7}{8}$ — 1 — $1\frac{1}{8}$ — $1\frac{3}{16}$ — $1\frac{1}{4}$ — — — $1\frac{7}{16}$ — $1\frac{1}{2}$
29	40BS29	4.900	1	2.60	$\frac{5}{8}$ — $\frac{3}{4}$ — $\frac{7}{8}$ — 1 — $1\frac{1}{8}$ — $1\frac{3}{16}$ — $1\frac{1}{4}$ — — — $1\frac{7}{16}$ — $1\frac{1}{2}$
30	40BS30	5.060	1	2.70	$\frac{5}{8}$ — $\frac{3}{4}$ — $\frac{7}{8}$ — 1 — $1\frac{1}{8}$ — $1\frac{3}{16}$ — $1\frac{1}{4}$ — — — $1\frac{7}{16}$ — $1\frac{1}{2}$
31	40BS31	5.220	1	2.88	$\frac{5}{8}$ — $\frac{3}{4}$ — $\frac{7}{8}$ — 1 — $1\frac{1}{8}$ — $1\frac{3}{16}$ — $1\frac{1}{4}$ — — — $1\frac{7}{16}$ — $1\frac{1}{2}$
32	40BS32	5.380	1	3.00	$\frac{5}{8}$ — $\frac{3}{4}$ — $\frac{7}{8}$ — 1 — $1\frac{1}{8}$ — $1\frac{3}{16}$ — $1\frac{1}{4}$ — — — $1\frac{7}{16}$ — $1\frac{1}{2}$
33	40BS33	5.540	1	3.03	$\frac{5}{8}$ — $\frac{3}{4}$ — $\frac{7}{8}$ — 1 — $1\frac{1}{8}$ — $1\frac{3}{16}$ — $1\frac{1}{4}$ — — — $1\frac{7}{16}$ — $1\frac{1}{2}$
34	40BS34	5.700	1	3.11	$\frac{5}{8}$ — $\frac{3}{4}$ — $\frac{7}{8}$ — 1 — $1\frac{1}{8}$ — $1\frac{3}{16}$ — $1\frac{1}{4}$ — — — $1\frac{7}{16}$ — $1\frac{1}{2}$
35	40BS35	5.860	1	3.20	$\frac{5}{8}$ — $\frac{3}{4}$ — $\frac{7}{8}$ — 1 — $1\frac{1}{8}$ — $1\frac{3}{16}$ — $1\frac{1}{4}$ — — — $1\frac{7}{16}$ — $1\frac{1}{2}$
36	40BS36	6.020	1	3.39	$\frac{5}{8}$ — $\frac{3}{4}$ — $\frac{7}{8}$ — 1 — $1\frac{1}{8}$ — $1\frac{3}{16}$ — $1\frac{1}{4}$ — — — $1\frac{7}{16}$ — $1\frac{1}{2}$
37	40BS37	6.180	1	3.45	$\frac{5}{8}$ — $\frac{3}{4}$ — $\frac{7}{8}$ — 1 — $1\frac{1}{8}$ — $1\frac{3}{16}$ — $1\frac{1}{4}$ — — — $1\frac{7}{16}$ — $1\frac{1}{2}$
38	40BS38	6.330	1	3.50	$\frac{5}{8}$ — $\frac{3}{4}$ — $\frac{7}{8}$ — 1 — $1\frac{1}{8}$ — $1\frac{3}{16}$ — $1\frac{1}{4}$ — — — $1\frac{7}{16}$ — $1\frac{1}{2}$
39	40BS39	6.490	1	4.00	$\frac{5}{8}$ — $\frac{3}{4}$ — $\frac{7}{8}$ — 1 — $1\frac{1}{8}$ — $1\frac{3}{16}$ — $1\frac{1}{4}$ — — — $1\frac{7}{16}$ — $1\frac{1}{2}$
40	40BS40	6.650	$1\frac{1}{8}$	4.28	— $\frac{3}{4}$ — $\frac{7}{8}$ — 1 — $1\frac{1}{8}$ — $1\frac{3}{16}$ — $1\frac{1}{4}$ — — — $1\frac{7}{16}$ — $1\frac{1}{2}$
41	40BS41	6.810	$1\frac{1}{8}$	4.58	— $\frac{3}{4}$ — $\frac{7}{8}$ — 1 — $1\frac{1}{8}$ — $1\frac{3}{16}$ — $1\frac{1}{4}$ — — — $1\frac{7}{16}$ — $1\frac{1}{2}$
42	40BS42	6.970	$1\frac{1}{8}$	4.64	— $\frac{3}{4}$ — $\frac{7}{8}$ — 1 — $1\frac{1}{8}$ — $1\frac{3}{16}$ — $1\frac{1}{4}$ — — — $1\frac{7}{16}$ — $1\frac{1}{2}$
43	40BS43	7.130	$1\frac{1}{8}$	4.80	— $\frac{3}{4}$ — $\frac{7}{8}$ — 1 — $1\frac{1}{8}$ — $1\frac{3}{16}$ — $1\frac{1}{4}$ — — — $1\frac{7}{16}$ — $1\frac{1}{2}$
44	40BS44	7.290	$1\frac{1}{8}$	4.96	— $\frac{3}{4}$ — $\frac{7}{8}$ — 1 — $1\frac{1}{8}$ — $1\frac{3}{16}$ — $1\frac{1}{4}$ — — — $1\frac{7}{16}$ — $1\frac{1}{2}$
45	40BS45	7.450	$1\frac{1}{8}$	5.06	— $\frac{3}{4}$ — $\frac{7}{8}$ — 1 — $1\frac{1}{8}$ — $1\frac{3}{16}$ — $1\frac{1}{4}$ — — — $1\frac{7}{16}$ — $1\frac{1}{2}$
46	40BS46	7.610	$1\frac{1}{8}$	5.19	— $\frac{3}{4}$ — $\frac{7}{8}$ — 1 — $1\frac{1}{8}$ — $1\frac{3}{16}$ — $1\frac{1}{4}$ — — — $1\frac{7}{16}$ — $1\frac{1}{2}$
47	40BS47	7.770	$1\frac{1}{8}$	5.26	— $\frac{3}{4}$ — $\frac{7}{8}$ — 1 — $1\frac{1}{8}$ — $1\frac{3}{16}$ — $1\frac{1}{4}$ — — — $1\frac{7}{16}$ — $1\frac{1}{2}$
48	40BS48	7.930	$1\frac{1}{8}$	5.66	— $\frac{3}{4}$ — $\frac{7}{8}$ — 1 — $1\frac{1}{8}$ — $1\frac{3}{16}$ — $1\frac{1}{4}$ — — — $1\frac{7}{16}$ — $1\frac{1}{2}$
49	40BS49	8.090	$1\frac{1}{8}$	5.72	— $\frac{3}{4}$ — $\frac{7}{8}$ — 1 — $1\frac{1}{8}$ — $1\frac{3}{16}$ — $1\frac{1}{4}$ — — — $1\frac{7}{16}$ — $1\frac{1}{2}$
50	40BS50	8.250	$1\frac{1}{8}$	5.78	— $\frac{3}{4}$ — $\frac{7}{8}$ — 1 — $1\frac{1}{8}$ — $1\frac{3}{16}$ — $1\frac{1}{4}$ — — — $1\frac{7}{16}$ — $1\frac{1}{2}$
51	40BS51	8.410	$1\frac{1}{8}$	5.90	— $\frac{3}{4}$ — $\frac{7}{8}$ — 1 — $1\frac{1}{8}$ — $1\frac{3}{16}$ — $1\frac{1}{4}$ — — — $1\frac{7}{16}$ — $1\frac{1}{2}$
52	40BS52	8.570	$1\frac{1}{8}$	5.94	— $\frac{3}{4}$ — $\frac{7}{8}$ — 1 — $1\frac{1}{8}$ — $1\frac{3}{16}$ — $1\frac{1}{4}$ — — — $1\frac{7}{16}$ — $1\frac{1}{2}$
53	40BS53	8.730	$1\frac{1}{8}$	6.12	— $\frac{3}{4}$ — $\frac{7}{8}$ — 1 — $1\frac{1}{8}$ — $1\frac{3}{16}$ — $1\frac{1}{4}$ — — — $1\frac{7}{16}$ — $1\frac{1}{2}$
54	40BS54	8.890	$1\frac{1}{8}$	6.24	— $\frac{3}{4}$ — $\frac{7}{8}$ — 1 — $1\frac{1}{8}$ — $1\frac{3}{16}$ — $1\frac{1}{4}$ — — — $1\frac{7}{16}$ — $1\frac{1}{2}$
55	40BS55	9.040	$1\frac{1}{8}$	6.66	— $\frac{3}{4}$ — $\frac{7}{8}$ — 1 — $1\frac{1}{8}$ — $1\frac{3}{16}$ — $1\frac{1}{4}$ — — — $1\frac{7}{16}$ — $1\frac{1}{2}$
56	40BS56	9.200	$1\frac{1}{8}$	6.71	— $\frac{3}{4}$ — $\frac{7}{8}$ — 1 — $1\frac{1}{8}$ — $1\frac{3}{16}$ — $1\frac{1}{4}$ — — — $1\frac{7}{16}$ — $1\frac{1}{2}$
57	40BS57	9.360	$1\frac{1}{8}$	6.94	— $\frac{3}{4}$ — $\frac{7}{8}$ — 1 — $1\frac{1}{8}$ — $1\frac{3}{16}$ — $1\frac{1}{4}$ — — — $1\frac{7}{16}$ — $1\frac{1}{2}$
58	40BS58	9.520	$1\frac{1}{8}$	7.17	— $\frac{3}{4}$ — $\frac{7}{8}$ — 1 — $1\frac{1}{8}$ — $1\frac{3}{16}$ — $1\frac{1}{4}$ — — — $1\frac{7}{16}$ — $1\frac{1}{2}$
59	40BS59	9.680	$1\frac{1}{8}$	7.38	— $\frac{3}{4}$ — $\frac{7}{8}$ — 1 — $1\frac{1}{8}$ — $1\frac{3}{16}$ — $1\frac{1}{4}$ — — — $1\frac{7}{16}$ — $1\frac{1}{2}$
60	40BS60	9.840	$1\frac{1}{8}$	7.68	— $\frac{3}{4}$ — $\frac{7}{8}$ — 1 — $1\frac{1}{8}$ — $1\frac{3}{16}$ — $1\frac{1}{4}$ — — — $1\frac{7}{16}$ — $1\frac{1}{2}$
70	40BS70	11.430	$1\frac{1}{4}$	10.80	— $\frac{3}{4}$ — $\frac{7}{8}$ — 1 — $1\frac{1}{8}$ — $1\frac{3}{16}$ — $1\frac{1}{4}$ — — — $1\frac{7}{16}$ — $1\frac{1}{2}$
72	40BS72	11.750	$1\frac{1}{4}$	11.30	— $\frac{3}{4}$ — $\frac{7}{8}$ — 1 — $1\frac{1}{8}$ — $1\frac{3}{16}$ — $1\frac{1}{4}$ — — — $1\frac{7}{16}$ — $1\frac{1}{2}$
80	40BS80	13.030	$1\frac{1}{4}$	13.20	— $\frac{3}{4}$ — $\frac{7}{8}$ — 1 — $1\frac{1}{8}$ — $1\frac{3}{16}$ — $1\frac{1}{4}$ — — — $1\frac{7}{16}$ — $1\frac{1}{2}$
84	40BS84	13.660	$1\frac{1}{4}$	13.84	— $\frac{3}{4}$ — $\frac{7}{8}$ — 1 — $1\frac{1}{8}$ — $1\frac{3}{16}$ — $1\frac{1}{4}$ — — — $1\frac{7}{16}$ — $1\frac{1}{2}$
96	40BS96	15.570	$1\frac{1}{4}$	17.44	— $\frac{3}{4}$ — $\frac{7}{8}$ — 1 — $1\frac{1}{8}$ — $1\frac{3}{16}$ — $1\frac{1}{4}$ — — — $1\frac{7}{16}$ — $1\frac{1}{2}$
112	40BS112	18.120	$1\frac{1}{4}$	22.45	— 1 — $1\frac{1}{8}$ — $1\frac{3}{16}$ — $1\frac{1}{4}$ — — — $1\frac{7}{16}$ — $1\frac{1}{2}$

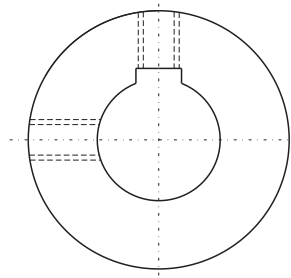
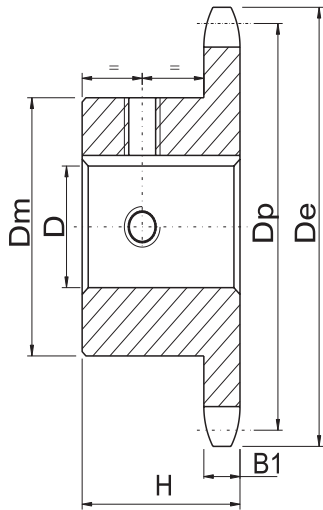
★ Indicates no keyway.  
 2  $\frac{1}{4}$ " setscrews only  
 Hub diameters vary to suit different bore sizes.

NOTE: KEYWAY IS ON CENTER LINE OF TOOTH.

# Finished Bore Sprockets American Standard Series

## No.40

- Pitch  $\frac{1}{2}$ "       Roller  $\Phi$  0.312"  
 Tooth width B1 0.284"



TYPE BS

Power Transmission Professional

### No.40-Hardened Teeth — 2 Setscrews — Bored To Size

No. Teeth	Number	De	H	Weight Lbs. (Approx.)	Stock Finished Bores Includes Keyway and 2 Setscrews
9	40BS9HT	1.670	$\frac{7}{8}$	.16	—★ $\frac{1}{2}$ — $\frac{5}{8}$
10	40BS10HT	1.840	$\frac{7}{8}$	.24	—★ $\frac{1}{2}$ — $\frac{5}{8}$ — $\frac{3}{4}$
11	40BS11HT	2.000	$\frac{7}{8}$	.28	—★ $\frac{1}{2}$ — $\frac{5}{8}$ — $\frac{3}{4}$ — $\frac{7}{8}$
12	40BS12HT	2.170	$\frac{7}{8}$	.34	—★ $\frac{1}{2}$ — $\frac{5}{8}$ — $\frac{3}{4}$ — $\frac{7}{8}$ — 1
13	40BS13HT	2.330	$\frac{7}{8}$	.45	—★ $\frac{1}{2}$ — $\frac{5}{8}$ — $\frac{3}{4}$ — $\frac{7}{8}$ — 1
14	40BS14HT	2.490	$\frac{7}{8}$	.51	—★ $\frac{1}{2}$ — $\frac{5}{8}$ — $\frac{3}{4}$ — $\frac{7}{8}$ — 1 — $1\frac{1}{8}$
15	40BS15HT	2.650	$\frac{7}{8}$	.53	—★ $\frac{1}{2}$ — $\frac{5}{8}$ — $\frac{3}{4}$ — $\frac{7}{8}$ — 1 — $1\frac{1}{8}$ — $1\frac{1}{16}$ — $1\frac{1}{4}$
16	40BS16HT	2.810	$\frac{7}{8}$	.66	$\frac{5}{8}$ — $\frac{3}{4}$ — $\frac{7}{8}$ — 1 — $1\frac{1}{8}$ — $1\frac{1}{16}$ — $1\frac{1}{4}$
17	40BS17HT	2.980	1	.88	$\frac{5}{8}$ — $\frac{3}{4}$ — $\frac{7}{8}$ — 1 — $1\frac{1}{8}$ — $1\frac{1}{16}$ — $1\frac{1}{4}$
18	40BS18HT	3.140	1	1.03	$\frac{5}{8}$ — $\frac{3}{4}$ — $\frac{7}{8}$ — 1 — $1\frac{1}{8}$ — $1\frac{1}{16}$ — $1\frac{1}{4}$ — $1\frac{1}{8}$ — $1\frac{1}{16}$ — $1\frac{1}{2}$
19	40BS19HT	2.300	1	1.17	$\frac{5}{8}$ — $\frac{3}{4}$ — $\frac{7}{8}$ — 1 — $1\frac{1}{8}$ — $1\frac{1}{16}$ — $1\frac{1}{4}$ — $1\frac{1}{8}$ — $1\frac{1}{16}$ — $1\frac{1}{2}$
20	40BS20HT	3.460	1	1.33	$\frac{5}{8}$ — $\frac{3}{4}$ — $\frac{7}{8}$ — 1 — $1\frac{1}{8}$ — $1\frac{1}{16}$ — $1\frac{1}{4}$ — $1\frac{1}{8}$ — $1\frac{1}{16}$ — $1\frac{1}{2}$
21	40BS21HT	3.620	1	1.53	$\frac{5}{8}$ — $\frac{3}{4}$ — $\frac{7}{8}$ — 1 — $1\frac{1}{8}$ — $1\frac{1}{16}$ — $1\frac{1}{4}$ — $1\frac{1}{8}$ — $1\frac{1}{16}$ — $1\frac{1}{2}$
22	40BS22HT	3.780	1	1.66	$\frac{5}{8}$ — $\frac{3}{4}$ — $\frac{7}{8}$ — 1 — $1\frac{1}{8}$ — $1\frac{1}{16}$ — $1\frac{1}{4}$ — $1\frac{1}{8}$ — $1\frac{1}{16}$ — $1\frac{1}{2}$
23	40BS23HT	3.940	1	1.92	$\frac{5}{8}$ — $\frac{3}{4}$ — $\frac{7}{8}$ — 1 — $1\frac{1}{8}$ — $1\frac{1}{16}$ — $1\frac{1}{4}$ — $1\frac{1}{8}$ — $1\frac{1}{16}$ — $1\frac{1}{2}$
24	40BS24HT	4.100	1	2.10	$\frac{5}{8}$ — $\frac{3}{4}$ — $\frac{7}{8}$ — 1 — $1\frac{1}{8}$ — $1\frac{1}{16}$ — $1\frac{1}{4}$ — $1\frac{1}{8}$ — $1\frac{1}{16}$ — $1\frac{1}{2}$
25	40BS25HT	4.260	1	2.22	— $\frac{3}{4}$ — $\frac{7}{8}$ — 1 — $1\frac{1}{8}$ — $1\frac{1}{16}$ — $1\frac{1}{4}$ — $1\frac{1}{8}$ — $1\frac{1}{16}$ — $1\frac{1}{2}$
26	40BS26HT	4.420	1	2.34	— $\frac{3}{4}$ — $\frac{7}{8}$ — 1 — $1\frac{1}{8}$ — $1\frac{1}{16}$ — $1\frac{1}{4}$ — $1\frac{1}{8}$ — $1\frac{1}{16}$ — $1\frac{1}{2}$
28	40BS28HT	4.740	1	2.50	— $\frac{3}{4}$ — $\frac{7}{8}$ — 1 — $1\frac{1}{8}$ — $1\frac{1}{16}$ — $1\frac{1}{4}$ — $1\frac{1}{8}$ — $1\frac{1}{16}$ — $1\frac{1}{2}$
30	40BS30HT	5.060	1	2.70	— $\frac{3}{4}$ — $\frac{7}{8}$ — 1 — $1\frac{1}{8}$ — $1\frac{1}{16}$ — $1\frac{1}{4}$ — $1\frac{1}{8}$ — $1\frac{1}{16}$ — $1\frac{1}{2}$

★ Indicates no keyway. 2  $\frac{1}{4}$ " setscrews only in  $\frac{1}{2}$ " &  $\frac{3}{8}$ " bore at 90° .  
 † Setscrews at 90° and 180° to key.

NOTE: KEYWAY IS ON CENTER LINE OF TOOTH.

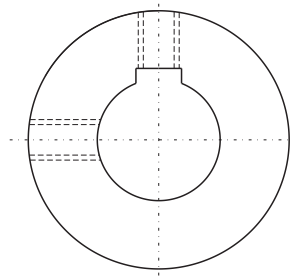
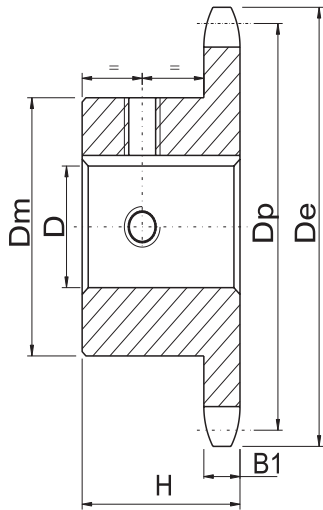
Stock hardened teeth sprockets afford longer chain and sprocket life. Hardened teeth on the smaller sprocket of a roller chain drive are recommended if the drive ratio is four to one or greater or if the smaller sprocket has 24 teeth or less and is running at a speed of over 600 R.P.M.



# Finished Bore Sprockets American Standard Series

# No.50

- Pitch  $\frac{5}{8}$ "      Roller  $\Phi$  0.400"  
 Tooth width B1 0.343"



**TYPE BS**

**Power Transmission Professional**

## No.50-Hardened Teeth — 2 Setscrews — Bored To Size

No. Teeth	Number	De	H	Weight Lbs. (Approx.)	Stock Finished Bores Includes Keyway and 2 Setscrews
9	50BS9HT	2.09	1	.3	$\frac{5}{8}$ — $\frac{3}{4}$
10	50BS10HT	2.30	1	.3	$\frac{5}{8}$ — $\frac{3}{4}$ — $\frac{7}{8}$ — t1
11	50BS11HT	2.50	1	.6	$\frac{5}{8}$ — $\frac{3}{4}$ — $\frac{7}{8}$ — 1
12	50BS12HT	2.71	1	.7	$\frac{5}{8}$ — $\frac{3}{4}$ — $\frac{7}{8}$ — 1 — $\frac{1}{8}$ — $\frac{1}{16}$ — $\frac{1}{4}$
13	50BS13HT	2.91	1	.8	$\frac{5}{8}$ — $\frac{3}{4}$ — $\frac{7}{8}$ — 1 — $\frac{1}{8}$ — $\frac{1}{16}$ — $\frac{1}{4}$
14	50BS14HT	3.11	1	1.0	$\frac{5}{8}$ — $\frac{3}{4}$ — $\frac{7}{8}$ — 1 — $\frac{1}{8}$ — $\frac{1}{16}$ — $\frac{1}{4}$
15	50BS15HT	3.32	1	1.2	$\frac{5}{8}$ — $\frac{3}{4}$ — $\frac{7}{8}$ — 1 — $\frac{1}{8}$ — $\frac{1}{16}$ — $\frac{1}{4}$ — $\frac{1}{8}$ — $\frac{1}{16}$ — $\frac{1}{2}$
16	50BS16HT	3.52	1	1.5	$\frac{5}{8}$ — $\frac{3}{4}$ — $\frac{7}{8}$ — 1 — $\frac{1}{8}$ — $\frac{1}{16}$ — $\frac{1}{4}$ — $\frac{1}{8}$ — $\frac{1}{16}$ — $\frac{1}{2}$ — $\frac{1}{8}$
17	50BS17HT	3.72	1	1.7	$\frac{5}{8}$ — $\frac{3}{4}$ — $\frac{7}{8}$ — 1 — $\frac{1}{8}$ — $\frac{1}{16}$ — $\frac{1}{4}$ — $\frac{1}{8}$ — $\frac{1}{16}$ — $\frac{1}{2}$ — $\frac{1}{8}$
18	50BS18HT	3.92	1	2.0	$\frac{3}{4}$ — $\frac{7}{8}$ — 1 — $\frac{1}{8}$ — $\frac{1}{16}$ — $\frac{1}{4}$ — $\frac{1}{8}$ — $\frac{1}{16}$ — $\frac{1}{2}$ — $\frac{1}{8}$
19	50BS19HT	4.12	1	2.2	$\frac{3}{4}$ — $\frac{7}{8}$ — 1 — $\frac{1}{8}$ — $\frac{1}{16}$ — $\frac{1}{4}$ — $\frac{1}{8}$ — $\frac{1}{16}$ — $\frac{1}{2}$ — $\frac{1}{8}$
20	50BS20HT	4.32	1	2.5	$\frac{3}{4}$ — $\frac{7}{8}$ — 1 — $\frac{1}{8}$ — $\frac{1}{16}$ — $\frac{1}{4}$ — $\frac{1}{8}$ — $\frac{1}{16}$ — $\frac{1}{2}$ — $\frac{1}{8}$
21	50BS21HT	4.52	1	2.6	$\frac{3}{4}$ — 1 — $\frac{1}{8}$ — $\frac{1}{16}$ — $\frac{1}{4}$ — $\frac{1}{8}$ — $\frac{1}{16}$ — $\frac{1}{2}$
22	50BS22HT	4.72	1	2.8	$\frac{3}{4}$ — 1 — $\frac{1}{8}$ — $\frac{1}{16}$ — $\frac{1}{4}$ — $\frac{1}{8}$ — $\frac{1}{16}$ — $\frac{1}{2}$
23	50BS23HT	4.92	1	3.2	$\frac{3}{4}$ — 1 — $\frac{1}{8}$ — $\frac{1}{16}$ — $\frac{1}{4}$ — $\frac{1}{8}$ — $\frac{1}{16}$ — $\frac{1}{2}$
24	50BS24HT	5.12	$\frac{1}{4}$	4.0	$\frac{3}{4}$ — 1 — $\frac{1}{8}$ — $\frac{1}{16}$ — $\frac{1}{4}$ — $\frac{1}{8}$ — $\frac{1}{16}$ — $\frac{1}{2}$

★ Indicates no keyway, 2  $\frac{1}{4}$ " setscrews only in  $\frac{1}{2}$ " &  $\frac{3}{8}$ " bore at 90° .  
 † Setscrews at 90° and 180° to key.

NOTE: KEYWAY IS ON CENTER LINE OF TOOTH.

Stock hardened teeth sprockets afford longer chain and sprocket life. Hardened teeth on the smaller sprocket of a roller chain drive are recommended if the drive ratio is four to one or greater or if the smaller sprocket has 24 teeth or less and is running at a speed of over 600 R.P.M.

# Finished Bore Sprockets American Standard Series

# No.60

- Pitch  $\frac{3}{4}$   Roller  $\Phi$  0.468"
- Tooth width B1 0.459"

## Single-Type BS — 2 Setscrews — Bored To Size

No. Teeth	Number	De	H	Weight Lbs. (Approx.)	Stock Finished Bores Includes Keyway and 2 Setscrews
9	60BS9	2.510	1¼	.6	¾ - 7/8 - 1
10	60BS10	2.760	1¼	.7	¾ - 7/8 - 1 - 1/16 - 1 1/16 - 1 ¼
11	60BS11	3.000	1¼	.9	¾ - 7/8 - 1 - 1/16 - 1 1/16 - 1 ¼
11	60BS11W ★	3.000	1¼	.8	1 ¼
12	60BS12	3.250	1¼	1.3	¾ - 7/8 - 1 - 1/16 - 1 1/16 - 1 ¼ - 1 1/16
12	60BS12W ★	3.250	1¼	1.1	1 ¼
13	60BS13	3.490	1¼	1.3	¾ - 7/8 - 1 - 1/16 - 1 1/16 - 1 ¼ - 1 3/8 - 1 7/16 - 1 ½
14	60BS14	3.740	1¼	1.6	¾ - 7/8 - 1 - 1/16 - 1 1/16 - 1 ¼ - 1 3/8 - 1 7/16 - 1 ½ - 1 5/8
15	60BS15	3.980	1¼	1.7	¾ - 7/8 - 1 - 1/16 - 1 1/16 - 1 ¼ - 1 3/8 - 1 7/16 - 1 ½ - 1 5/8 - 1 ¾
16	60BS16	4.220	1¼	2.1	¾ - 7/8 - 1 - 1/16 - 1 1/16 - 1 ¼ - 1 3/8 - 1 7/16 - 1 ½ - 1 5/8 - 1 ¾ - 1 5/16
17	60BS17	4.460	1¼	2.4	1 - 1/8 - 1 1/8 - 1 3/8 - 1 ¼ - 1 3/8 - 1 7/16 - 1 ½ - 1 5/8 - 1 ¾ - 1 5/16
18	60BS18	4.700	1¼	2.6	1 - 1/8 - 1 1/8 - 1 3/8 - 1 ¼ - 1 3/8 - 1 7/16 - 1 ½ - 1 5/8 - 1 ¾ - 1 5/16
18	60BS18W ★	4.700	1¼	2.6	
19	60BS19	4.950	1¼	3.4	1 - 1/8 - 1 1/8 - 1 3/8 - 1 ¼ - 1 3/8 - 1 7/16 - 1 ½ - 1 5/8 - 1 ¾ - 1 5/16
20	60BS20	5.190	1¼	3.9	1 - 1/8 - 1 1/8 - 1 3/8 - 1 ¼ - 1 3/8 - 1 7/16 - 1 ½ - 1 5/8 - 1 ¾ - 1 5/16
21	60BS21	5.430	1¼	4.4	1 - 1/8 - 1 1/8 - 1 3/8 - 1 ¼ - 1 3/8 - 1 7/16 - 1 ½ - 1 5/8 - 1 ¾ - 1 5/16
22	60BS22	5.670	1¼	4.7	1 - 1/8 - 1 1/8 - 1 3/8 - 1 ¼ - 1 3/8 - 1 7/16 - 1 ½ - 1 5/8 - 1 ¾ - 1 5/16
23	60BS23	5.910	1¼	5.0	1 - 1/8 - 1 1/8 - 1 3/8 - 1 ¼ - 1 3/8 - 1 7/16 - 1 ½ - 1 5/8 - 1 ¾ - 1 5/16
24	60BS24	6.150	1¼	5.3	1 - 1/8 - 1 1/8 - 1 3/8 - 1 ¼ - 1 3/8 - 1 7/16 - 1 ½ - 1 5/8 - 1 ¾ - 1 5/16
25	60BS25	6.390	1¼	5.4	1 - 1/8 - 1 1/8 - 1 3/8 - 1 ¼ - 1 3/8 - 1 7/16 - 1 ½ - 1 5/8 - 1 ¾ - 1 5/16
26	60BS26	6.630	1¼	5.8	1 - 1/8 - 1 1/8 - 1 3/8 - 1 ¼ - 1 3/8 - 1 7/16 - 1 ½ - 1 5/8 - 1 ¾ - 1 5/16
27	60BS27	6.870	1¼	6.3	1 - 1/8 - 1 1/8 - 1 3/8 - 1 ¼ - 1 3/8 - 1 7/16 - 1 ½ - 1 5/8 - 1 ¾ - 1 5/16
28	60BS28	7.110	1¼	6.4	1 - 1/8 - 1 1/8 - 1 3/8 - 1 ¼ - 1 3/8 - 1 7/16 - 1 ½ - 1 5/8 - 1 ¾ - 1 5/16
29	60BS29	7.350	1¼	6.9	1 - 1/8 - 1 1/8 - 1 3/8 - 1 ¼ - 1 3/8 - 1 7/16 - 1 ½ - 1 5/8 - 1 ¾ - 1 5/16
30	60BS30	7.590	1¼	7.1	1 - 1/8 - 1 1/8 - 1 3/8 - 1 ¼ - 1 3/8 - 1 7/16 - 1 ½ - 1 5/8 - 1 ¾ - 1 5/16
31	60BS31	7.830	1¼	7.4	1 - 1/8 - 1 1/8 - 1 3/8 - 1 ¼ - 1 3/8 - 1 7/16 - 1 ½ - 1 5/8 - 1 ¾ - 1 5/16
32	60BS32	8.070	1¼	7.8	1 - 1/8 - 1 1/8 - 1 3/8 - 1 ¼ - 1 3/8 - 1 7/16 - 1 ½ - 1 5/8 - 1 ¾ - 1 5/16
33	60BS33	8.300	1¼	8.2	1 - 1/8 - 1 1/8 - 1 3/8 - 1 ¼ - 1 3/8 - 1 7/16 - 1 ½ - 1 5/8 - 1 ¾ - 1 5/16
34	60BS34	8.540	1¼	8.5	1 - 1/8 - 1 1/8 - 1 3/8 - 1 ¼ - 1 3/8 - 1 7/16 - 1 ½ - 1 5/8 - 1 ¾ - 1 5/16
35	60BS35	8.780	1¼	8.8	1 - 1/8 - 1 1/8 - 1 3/8 - 1 ¼ - 1 3/8 - 1 7/16 - 1 ½ - 1 5/8 - 1 ¾ - 1 5/16
36	60BS36	9.020	1¼	9.2	1 - 1/8 - 1 1/8 - 1 3/8 - 1 ¼ - 1 3/8 - 1 7/16 - 1 ½ - 1 5/8 - 1 ¾ - 1 5/16 - 2 - 2 3/16 - 2 7/16
37	60BS37	9.260	1¼	9.9	1 - 1/8 - 1 1/8 - 1 3/8 - 1 ¼ - 1 3/8 - 1 7/16 - 1 ½ - 1 5/8 - 1 ¾ - 1 5/16 - 2 - 2 3/16 - 2 7/16
38	60BS38	9.500	1¼	10.5	1 - 1/8 - 1 1/8 - 1 3/8 - 1 ¼ - 1 3/8 - 1 7/16 - 1 ½ - 1 5/8 - 1 ¾ - 1 5/16 - 2 - 2 3/16 - 2 7/16
39	60BS39	9.740	1¼	10.9	1 - 1/8 - 1 1/8 - 1 3/8 - 1 ¼ - 1 3/8 - 1 7/16 - 1 ½ - 1 5/8 - 1 ¾ - 1 5/16 - 2 - 2 3/16 - 2 7/16
40	60BS40	9.980	1¼	11.2	1 - 1/8 - 1 1/8 - 1 3/8 - 1 ¼ - 1 3/8 - 1 7/16 - 1 ½ - 1 5/8 - 1 ¾ - 1 5/16 - 2 - 2 3/16 - 2 7/16
41	60BS41	10.220	1¼	11.8	1 - 1/8 - 1 1/8 - 1 3/8 - 1 ¼ - 1 3/8 - 1 7/16 - 1 ½ - 1 5/8 - 1 ¾ - 1 5/16 - 2 - 2 3/16 - 2 7/16
42	60BS42	10.460	1¼	12.4	1 - 1/8 - 1 1/8 - 1 3/8 - 1 ¼ - 1 3/8 - 1 7/16 - 1 ½ - 1 5/8 - 1 ¾ - 1 5/16 - 2 - 2 3/16 - 2 7/16
43	60BS43	10.700	1¼	13.0	1 - 1/8 - 1 1/8 - 1 3/8 - 1 ¼ - 1 3/8 - 1 7/16 - 1 ½ - 1 5/8 - 1 ¾ - 1 5/16 - 2 - 2 3/16 - 2 7/16
44	60BS44	10.940	1¼	13.5	1 - 1/8 - 1 1/8 - 1 3/8 - 1 ¼ - 1 3/8 - 1 7/16 - 1 ½ - 1 5/8 - 1 ¾ - 1 5/16 - 2 - 2 3/16 - 2 7/16
45	60BS45	11.180	1¼	13.8	1 - 1/8 - 1 1/8 - 1 3/8 - 1 ¼ - 1 3/8 - 1 7/16 - 1 ½ - 1 5/8 - 1 ¾ - 1 5/16 - 2 - 2 3/16 - 2 7/16
46	60BS46	11.420	1¼	14.1	1 - 1/8 - 1 1/8 - 1 3/8 - 1 ¼ - 1 3/8 - 1 7/16 - 1 ½ - 1 5/8 - 1 ¾ - 1 5/16 - 2 - 2 3/16 - 2 7/16
47	60BS47	11.650	1¼	14.6	1 - 1/8 - 1 1/8 - 1 3/8 - 1 ¼ - 1 3/8 - 1 7/16 - 1 ½ - 1 5/8 - 1 ¾ - 1 5/16 - 2 - 2 3/16 - 2 7/16
48	60BS48	11.890	1¼	15.4	1 - 1/8 - 1 1/8 - 1 3/8 - 1 ¼ - 1 3/8 - 1 7/16 - 1 ½ - 1 5/8 - 1 ¾ - 1 5/16 - 2 - 2 3/16 - 2 7/16
49	60BS49	12.130	1¼	16.4	1 - 1/8 - 1 1/8 - 1 3/8 - 1 ¼ - 1 3/8 - 1 7/16 - 1 ½ - 1 5/8 - 1 ¾ - 1 5/16 - 2 - 2 3/16 - 2 7/16
50	60BS50	12.370	1¼	17.3	1 - 1/8 - 1 1/8 - 1 3/8 - 1 ¼ - 1 3/8 - 1 7/16 - 1 ½ - 1 5/8 - 1 ¾ - 1 5/16 - 2 - 2 3/16 - 2 7/16
51	60BS51	12.610	1¼	18.3	1 - 1/8 - 1 1/8 - 1 3/8 - 1 ¼ - 1 3/8 - 1 7/16 - 1 ½ - 1 5/8 - 1 ¾ - 1 5/16 - 2 - 2 3/16 - 2 7/16
52	60BS52	12.850	1¼	19.3	1 - 1/8 - 1 1/8 - 1 3/8 - 1 ¼ - 1 3/8 - 1 7/16 - 1 ½ - 1 5/8 - 1 ¾ - 1 5/16 - 2 - 2 3/16 - 2 7/16
53	60BS53	13.090	1¼	20.3	1 - 1/8 - 1 1/8 - 1 3/8 - 1 ¼ - 1 3/8 - 1 7/16 - 1 ½ - 1 5/8 - 1 ¾ - 1 5/16 - 2 - 2 3/16 - 2 7/16
54	60BS54	13.330	1¼	21.0	1 - 1/8 - 1 1/8 - 1 3/8 - 1 ¼ - 1 3/8 - 1 7/16 - 1 ½ - 1 5/8 - 1 ¾ - 1 5/16 - 2 - 2 3/16 - 2 7/16
55	60BS55	13.570	1¾	21.2	1 - 1/8 - 1 1/8 - 1 3/8 - 1 ¼ - 1 3/8 - 1 7/16 - 1 ½ - 1 5/8 - 1 ¾ - 1 5/16 - 2 - 2 3/16 - 2 7/16
56	60BS56	13.810	1¾	21.3	1 - 1/8 - 1 1/8 - 1 3/8 - 1 ¼ - 1 3/8 - 1 7/16 - 1 ½ - 1 5/8 - 1 ¾ - 1 5/16 - 2 - 2 3/16 - 2 7/16
57	60BS57	14.040	1¾	22.2	1 - 1/8 - 1 1/8 - 1 3/8 - 1 ¼ - 1 3/8 - 1 7/16 - 1 ½ - 1 5/8 - 1 ¾ - 1 5/16 - 2 - 2 3/16 - 2 7/16
58	60BS58	14.280	1¾	23.0	1 - 1/8 - 1 1/8 - 1 3/8 - 1 ¼ - 1 3/8 - 1 7/16 - 1 ½ - 1 5/8 - 1 ¾ - 1 5/16 - 2 - 2 3/16 - 2 7/16
59	60BS59	14.520	1¾	23.8	1 - 1/8 - 1 1/8 - 1 3/8 - 1 ¼ - 1 3/8 - 1 7/16 - 1 ½ - 1 5/8 - 1 ¾ - 1 5/16 - 2 - 2 3/16 - 2 7/16
60	60BS60	14.760	1¾	25.0	1 - 1/8 - 1 1/8 - 1 3/8 - 1 ¼ - 1 3/8 - 1 7/16 - 1 ½ - 1 5/8 - 1 ¾ - 1 5/16 - 2 - 2 3/16 - 2 7/16
70	60BS70	17.150	1¾	31.4	1 - 1/8 - 1 1/8 - 1 3/8 - 1 ¼ - 1 3/8 - 1 7/16 - 1 ½ - 1 5/8 - 1 ¾ - 1 5/16 - 2 - 2 3/16 - 2 7/16
72	60BS72	17.630	2	33.5	1 - 1/8 - 1 1/8 - 1 3/8 - 1 ¼ - 1 3/8 - 1 7/16 - 1 ½ - 1 5/8 - 1 ¾ - 1 5/16 - 2 - 2 3/16 - 2 7/16
80	60BS80	19.540	2	41.2	1 - 1/8 - 1 1/8 - 1 3/8 - 1 ¼ - 1 3/8 - 1 7/16 - 1 ½ - 1 5/8 - 1 ¾ - 1 5/16 - 2 - 2 3/16 - 2 7/16
84	60BS84	20.490	2	45.8	1 - 1/8 - 1 1/8 - 1 3/8 - 1 ¼ - 1 3/8 - 1 7/16 - 1 ½ - 1 5/8 - 1 ¾ - 1 5/16 - 2 - 2 3/16 - 2 7/16
96	60BS96	23.360	2½	62.3	1 - 1/8 - 1 1/8 - 1 3/8 - 1 ¼ - 1 3/8 - 1 7/16 - 1 ½ - 1 5/8 - 1 ¾ - 1 5/16 - 2 - 2 3/16 - 2 7/16
112	60BS112	27.180	2½	81.1	1 - 1/8 - 1 1/8 - 1 3/8 - 1 ¼ - 1 3/8 - 1 7/16 - 1 ½ - 1 5/8 - 1 ¾ - 1 5/16 - 2 - 2 3/16 - 2 7/16

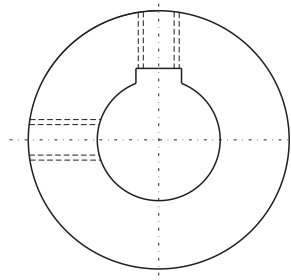
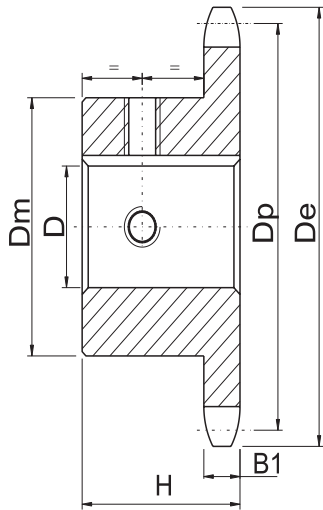
Hub diameters vary to suit different bore sizes.  
★W=Winch Sprockets-KW 5/16 × 5/32-SS at 90°

NOTE:KEYWAY IS ON CENTER LINE OF TOOTH.

# Finished Bore Sprockets American Standard Series

## No.60

- Pitch  $\frac{3}{4}$ "       Roller  $\Phi$  0.468"
- Tooth width B1 0.459"



TYPE BS

Power Transmission Professional

### No.60-Hardened Teeth — 2 Setscrews — Bored To Size

No. Teeth	Number	De	H	Weight Lbs. (Approx.)	Stock Finished Bores Includes Keyway and 2 Setscrews
9	60BS9HT	2.51	1/4	.6	3/4 -7/8 -1
10	60BS10HT	2.76	1/4	.7	3/4 -7/8 -1 -1/8 -1/16 -1/4
11	60BS11HT	3.00	1/4	.9	3/4 -7/8 -1 -1/8 -1/16 -1/4
12	60BS12HT	3.25	1/4	1.3	3/4 -7/8 -1 -1/8 -1/16 -1/4 -1/16
13	60BS13HT	3.49	1/4	1.3	3/4 -7/8 -1 -1/8 -1/16 -1/4 -1/8 -1/16 -1/2
14	60BS14HT	3.74	1/4	1.6	3/4 -7/8 -1 -1/8 -1/16 -1/4 -1/8 -1/16 -1/2 -1/8
15	60BS15HT	3.98	1/4	1.7	3/4 -7/8 -1 -1/8 -1/16 -1/4 -1/8 -1/16 -1/2 -1/8 -1/4
16	60BS16HT	4.22	1/4	2.1	3/4 -7/8 -1 -1/8 -1/16 -1/4 -1/8 -1/16 -1/2 -1/8 -1/4 -1/16
17	60BS17HT	4.46	1/4	2.4	-1 -1/8 -1/16 -1/4 -1/8 -1/16 -1/2 -1/8 -1/4 -1/16
18	60BS18HT	4.70	1/4	2.6	-1 -1/8 -1/16 -1/4 -1/8 -1/16 -1/2 -1/8 -1/4 -1/16
19	60BS19HT	4.95	1/4	3.4	-1 -1/8 -1/16 -1/4 -1/8 -1/16 -1/2 -1/8 -1/4 -1/16
20	60BS20HT	5.19	1/4	3.9	-1 -1/8 -1/16 -1/4 -1/8 -1/16 -1/2 -1/8 -1/4 -1/16

NOTE:KEYWAY IS ON CENTER LINE OF TOOTH.

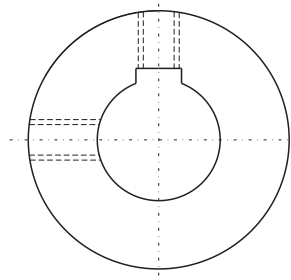
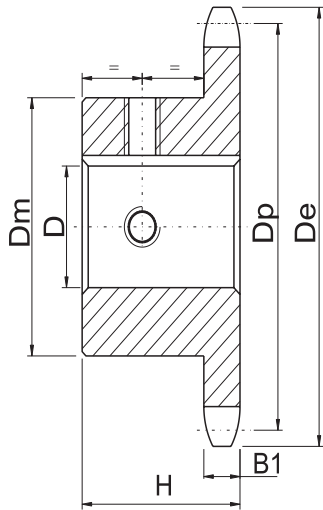
Stock hardened teeth sprockets afford longer chain and sprocket life .Hardened teeth on the smaller sprocket of a roller chain drive are recommended if the drive ratio is four to one or greater or if the smaller sprocket has 24 teeth or less and is running at a speed of over 600 R.P.M.



# Finished Bore Sprockets American Standard Series

## No.80

- Pitch                    1"                     Roller  $\Phi$                     0.625"
- Tooth width B1    0.575"



TYPE BS

Power Transmission Professional

### No.80-Hardened Teeth —2 Setscrews

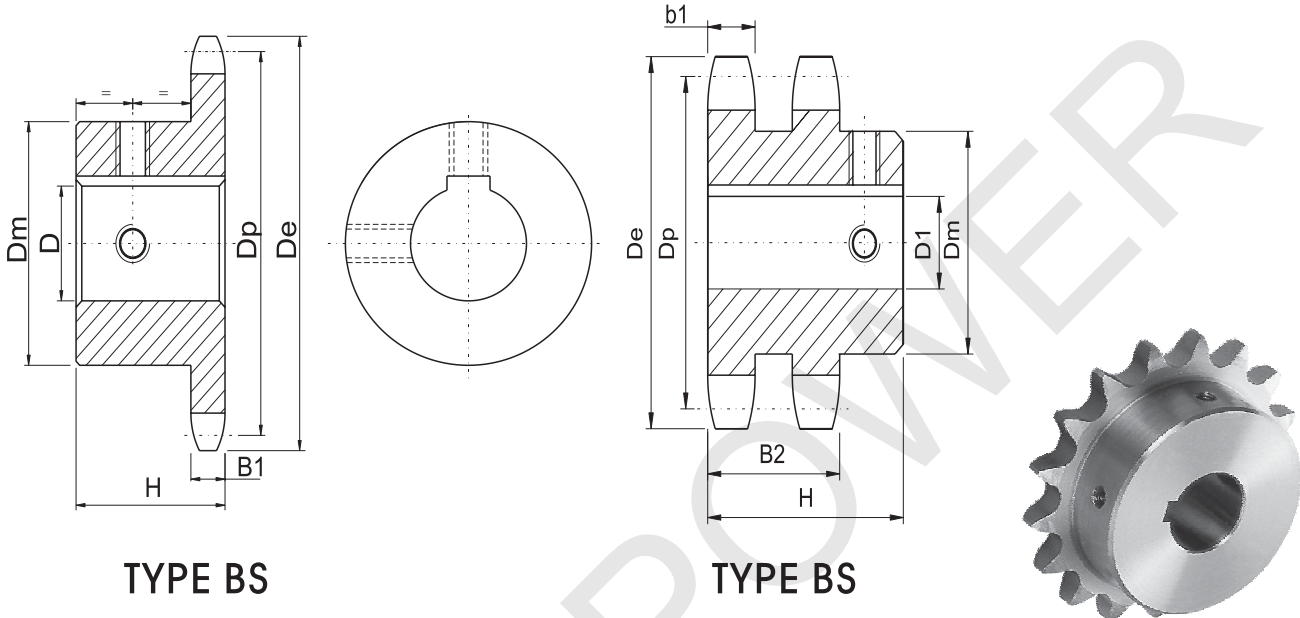
No. Teeth	Number	De	H	Weight Lbs. (Approx.)	Stock Finished Bores Includes Keyway and 2 Setscrews
9	80BS9HT	3.350	$\frac{1}{8}$	1.6	1 — $\frac{1}{8}$ — $\frac{1}{16}$ — $\frac{1}{4}$
10	80BS10HT	3.368	$\frac{1}{8}$	1.7	1 — $\frac{1}{8}$ — $\frac{1}{16}$ — $\frac{1}{4}$
11	80BS11HT	4.010	$\frac{1}{8}$	1.8	1 — $\frac{1}{8}$ — $\frac{1}{16}$ — $\frac{1}{4}$ — $\frac{1}{8}$ — $\frac{1}{16}$ — $\frac{1}{2}$ — $\frac{1}{8}$
12	80BS12HT	4.330	$\frac{1}{8}$	3.0	1 — $\frac{1}{8}$ — $\frac{1}{16}$ — $\frac{1}{4}$ — $\frac{1}{8}$ — $\frac{1}{16}$ — $\frac{1}{2}$ — $\frac{1}{8}$ — $\frac{1}{4}$
13	80BS13HT	4.660	$\frac{1}{2}$	3.5	1 — $\frac{1}{8}$ — $\frac{1}{16}$ — $\frac{1}{4}$ — $\frac{1}{8}$ — $\frac{1}{16}$ — $\frac{1}{2}$ — $\frac{1}{8}$ — $\frac{1}{4}$ — $\frac{1}{8}$ — $\frac{1}{16}$ —2
14	80BS14HT	4.980	$\frac{1}{2}$	4.1	1 — $\frac{1}{8}$ — $\frac{1}{16}$ — $\frac{1}{4}$ — $\frac{1}{8}$ — $\frac{1}{16}$ — $\frac{1}{2}$ — $\frac{1}{8}$ — $\frac{1}{4}$ — $\frac{1}{8}$ — $\frac{1}{16}$ —2
15	80BS15HT	5.300	$\frac{1}{2}$	5.2	1 — $\frac{1}{8}$ — $\frac{1}{16}$ — $\frac{1}{4}$ — $\frac{1}{8}$ — $\frac{1}{16}$ — $\frac{1}{2}$ — $\frac{1}{8}$ — $\frac{1}{4}$ — $\frac{1}{8}$ — $\frac{1}{16}$ —2
16	80BS16HT	5.630	$\frac{1}{2}$	6.1	1 — $\frac{1}{4}$ — $\frac{1}{8}$ — $\frac{1}{16}$ — $\frac{1}{2}$ — $\frac{1}{8}$ — $\frac{1}{4}$ — — — $\frac{1}{16}$ —2
17	80BS17HT	5.950	$\frac{1}{2}$	7.0	1 — $\frac{1}{4}$ — $\frac{1}{8}$ — $\frac{1}{16}$ — $\frac{1}{2}$ — $\frac{1}{8}$ — $\frac{1}{4}$ — — — $\frac{1}{16}$ —2 — $\frac{2}{16}$
18	80BS18HT	6.270	$\frac{1}{2}$	7.8	1 — $\frac{1}{4}$ — $\frac{1}{8}$ — $\frac{1}{16}$ — $\frac{1}{2}$ — $\frac{1}{8}$ — $\frac{1}{4}$ — — — $\frac{1}{16}$ —2 — $\frac{2}{16}$
19	80BS19HT	6.590	$\frac{1}{2}$	8.3	— $\frac{1}{4}$ — $\frac{1}{8}$ — $\frac{1}{16}$ — $\frac{1}{2}$ — $\frac{1}{8}$ — $\frac{1}{4}$ — — — $\frac{1}{16}$ —2 — $\frac{2}{16}$
20	80BS20HT	6.910	$\frac{1}{2}$	9.5	— $\frac{1}{8}$ — $\frac{1}{16}$ — $\frac{1}{2}$ — $\frac{1}{8}$ — $\frac{1}{4}$ — — — $\frac{1}{16}$ —2 — $\frac{2}{16}$

NOTE:KEYWAY IS ON CENTER LINE OF TOOTH.

# Finished Bore Sprockets American Standard Series

## No.80

- Pitch 1"       Roller  $\Phi$  0.625"  
 Tooth width b1 0.557"       Tooth width B1 0.575"       Tooth width B2 1.710"



TYPE BS

TYPE BS

### Single Type BS Winch — 2 Setscrews

No. Teeth	Number	De	H	Weight Lbs. (Approx.)	Stock Finished Bores Includes Keyway (see Footnote) and Screw at 90° from Keyway
10	80BS10W	3.680	1 $\frac{1}{8}$ "	1.7	1 $\frac{1}{4}$ "
11	80BS11W	4.010	1 $\frac{1}{8}$ "	1.8	1 $\frac{1}{4}$ "
12	80BS12W	4.330	1 $\frac{1}{8}$ "	3.0	1 $\frac{1}{4}$ "
15	80BS15W	5.300	1 $\frac{1}{2}$ "	5.2	1 $\frac{1}{4}$ "
18	80BS18W	6.270	1 $\frac{1}{2}$ "	7.8	1 $\frac{1}{4}$ " — 1 $\frac{1}{2}$ "

KEYWAY IS ON CENTER LINE OF TOOTH.

### Double Type BS Winch (Hardened Teeth) — 2 Setscrews

No. Teeth	Number	De	H	Weight Lbs. (Approx.)	Stock Finished Bores Includes Keyway (see Footnote) and Screw at 90° from Keyway
12	D80BS12HW	3.680	2 $\frac{1}{2}$ "	5.2	1 $\frac{1}{4}$ " — 1 $\frac{1}{2}$ " — 1 $\frac{3}{4}$ "
15	D80BS15HW	5.300	2 $\frac{1}{2}$ "	9.2	1 $\frac{1}{4}$ " — 1 $\frac{1}{2}$ " — 1 $\frac{3}{4}$ "
18	D80BS18HW	6.270	2 $\frac{3}{4}$ "	13.5	1 $\frac{1}{2}$ " — 1 $\frac{3}{4}$ " — 2"
20	D80BS20HW	6.910	2 $\frac{3}{4}$ "	16.2	1 $\frac{1}{2}$ " — 1 $\frac{3}{4}$ " — 2"
24	D80BS24HW	8.200	2 $\frac{3}{4}$ "	23.2	1 $\frac{1}{2}$ " — 2"

Footnote: 1 $\frac{1}{4}$ " bore has a  $\frac{3}{16}$ " x  $\frac{5}{32}$ " keyway, set screw at 90° from keyway

Footnote: 1 $\frac{1}{2}$ " bore has a  $\frac{3}{16}$ " x  $\frac{5}{32}$ " keyway, set screw at 90° from keyway

Footnote: 1 $\frac{3}{4}$ " bore has a  $\frac{3}{8}$ " x  $\frac{3}{16}$ " keyway, set screw at 90° from keyway

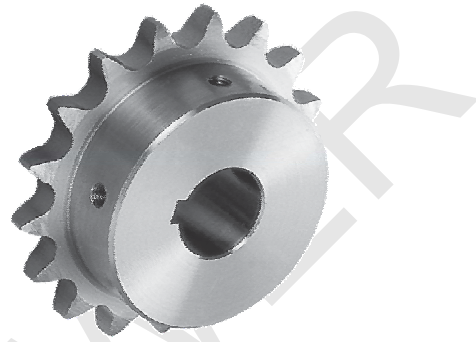
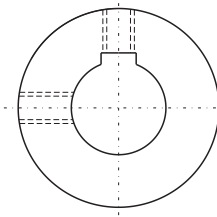
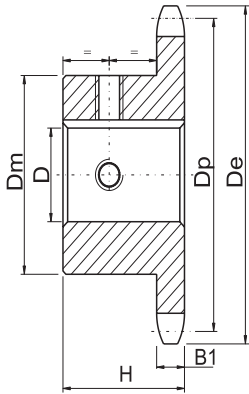
Footnote: 2" bore has a  $\frac{3}{8}$ " x  $\frac{3}{16}$ " keyway, set screw at 90° from keyway

KEYWAY IS ON CENTER LINE OF TOOTH.

# Finished Bore Sprockets American Standard Series

# No.100

- Pitch  $1\frac{1}{4}''$        Roller  $\Phi$   $0.750''$
- Tooth width B1  $0.692''$



## TYPE BS

### Single-Type BS — 2 Setscrews — Bored To Size

No. Teeth	Number	De	H	Weight Lbs. (Approx.)	Stock Finished Bores Includes Keyway and Setscrews
8	100BS8	3.770	1 $\frac{1}{8}$	2.8	1 — 1 $\frac{1}{16}$ — 1 $\frac{1}{4}$
9	100BS9	4.180	1 $\frac{1}{8}$	3.0	1 — 1 $\frac{3}{16}$ — 1 $\frac{1}{4}$ — 1 $\frac{1}{16}$
10	100BS10	4.600	1 $\frac{1}{8}$	3.9	1 — 1 $\frac{3}{16}$ — 1 $\frac{1}{4}$ — 1 $\frac{1}{16}$
11	100BS11	5.010	1 $\frac{1}{8}$	4.9	1 — 1 $\frac{3}{16}$ — 1 $\frac{1}{4}$ — 1 $\frac{1}{16}$ — 1 $\frac{1}{16}$ — 2 — 2 $\frac{3}{16}$
12	100BS12	5.420	1 $\frac{1}{8}$	6.0	1 — 1 $\frac{3}{16}$ — 1 $\frac{1}{4}$ — 1 $\frac{1}{16}$ — 1 $\frac{1}{16}$ — 2 — 2 $\frac{3}{16}$
13	100BS13	5.820	1 $\frac{1}{8}$	6.2	— 1 $\frac{3}{16}$ — 1 $\frac{1}{4}$ — 1 $\frac{1}{16}$ — 1 $\frac{1}{16}$ — 2 — 2 $\frac{3}{16}$
14	100BS14	6.230	1 $\frac{1}{8}$	6.6	— 1 $\frac{1}{4}$ — 1 $\frac{1}{16}$ — 1 $\frac{1}{16}$ — 2 — 2 $\frac{3}{16}$
15	100BS15	6.630	1 $\frac{3}{4}$	8.4	— 1 $\frac{1}{4}$ — 1 $\frac{1}{16}$ — 1 $\frac{1}{16}$ — 2 — 2 $\frac{3}{16}$
16	100BS16	7.030	1 $\frac{3}{4}$	9.0	— 1 $\frac{1}{16}$ — 1 $\frac{1}{16}$ — 2 — 2 $\frac{3}{16}$ — 2 $\frac{7}{16}$ — 2 $\frac{15}{16}$
17	100BS17	7.440	1 $\frac{3}{4}$	9.9	— 1 $\frac{1}{16}$ — 1 $\frac{1}{16}$ — 2 — 2 $\frac{3}{16}$ — 2 $\frac{7}{16}$ — 2 $\frac{15}{16}$
18	100BS18	7.840	1 $\frac{3}{4}$	10.6	— 1 $\frac{1}{16}$ — 1 $\frac{1}{16}$ — 2 — 2 $\frac{3}{16}$ — 2 $\frac{7}{16}$ — 2 $\frac{15}{16}$
19	100BS19	8.240	2	12.1	— 1 $\frac{1}{16}$ — 1 $\frac{1}{16}$ — 2 — 2 $\frac{3}{16}$ — 2 $\frac{7}{16}$ — 2 $\frac{15}{16}$
20	100BS20	8.640	2	13.2	— 1 $\frac{1}{16}$ — 1 $\frac{1}{16}$ — 2 — 2 $\frac{3}{16}$ — 2 $\frac{7}{16}$ — 2 $\frac{15}{16}$
21	100BS21	9.040	2	14.3	— 1 $\frac{1}{16}$ — 1 $\frac{1}{16}$ — 2 — 2 $\frac{3}{16}$ — 2 $\frac{7}{16}$ — 2 $\frac{15}{16}$
22	100BS22	9.440	2	15.1	— 1 $\frac{1}{16}$ — 1 $\frac{1}{16}$ — 2 — 2 $\frac{3}{16}$ — 2 $\frac{7}{16}$ — 2 $\frac{15}{16}$
23	100BS23	9.840	2	16.1	— 1 $\frac{1}{16}$ — 1 $\frac{1}{16}$ — 2 — 2 $\frac{3}{16}$ — 2 $\frac{7}{16}$ — 2 $\frac{15}{16}$
24	100BS24	10.250	2	18.1	— 1 $\frac{1}{16}$ — 1 $\frac{1}{16}$ — 2 — 2 $\frac{3}{16}$ — 2 $\frac{7}{16}$ — 2 $\frac{15}{16}$
25	100BS25	10.650	2	18.4	— 1 $\frac{1}{16}$ — 1 $\frac{1}{16}$ — 2 — 2 $\frac{3}{16}$ — 2 $\frac{7}{16}$ — 2 $\frac{15}{16}$

Hub diameters vary to suit different bore sizes.

NOTE: KEYWAY IS ON CENTER LINE OF TOOTH.

### STANDARD KEYWAYS AND SETSCREWS

### STANDARD BORE TOLERANCES

Diameter of Shaft	Keyway Width X Depth	Setcrew	Diameter of Shaft	Keyway Width X Depth	Setcrew
1/2 — 3/16	1/8 X 1/16	10-24	2 5/16 — 2 3/4	5/8 X 5/16	5/8 ★
3/8 — 1/8	3/16 X 3/32	1/4	1 1/16 — 3 1/4	3/4 X 3/8	5/8 ★
15/16 — 1 1/4	1/4 X 1/8	5/16	3 3/16 — 3 3/4	7/8 X 7/16	3/4
1 1/16 — 1 1/8	3/16 X 3/32	3/16	3 3/8 — 4 1/2	1 X 1/2	3/4
1 1/8 — 1 1/4	3/8 X 3/16	3/8	4 3/8 — 5 1/2	1 1/4 X 5/8	3/4
1 1/16 — 2 1/4	1/2 X 1/4	1/2 ★	5 3/8 — 6 1/2	1 1/2 X 3/4	3/4

1" and Less	+ .001 - .000
1 1/16" to 2"	+ .002 - .000
2 1/16" to 3"	+ .003 - .000
3 1/16" & up	+ .004 - .000

Bores with closer tolerances will be supplied at a slight increase in price.

★ Hub size may require smaller setscews in some instances.